

The home's impressive rear facade features 20 pillars of local, mosaic-cut natural stone encompassing the stamped concrete patio. A trio of forest green elements, including the standing-seam metal roof, Andersen 400 Series windows and Therma-Tru doors, complements the golden logs.

By Suzanna Logan | Photography by Mark Sorenson



Why wait until retirement to enjoy the home of your dreams? That question prompted this couple to begin their log home journey a decade earlier than expected.

No Time like the Present

46



They say that good things come to those who wait, but if you ask John and Tami DePietro, great things come to those who take action. When the couple purchased two adjoining New Hampshire properties in the summer of 2019, they expected to take things slow — wait a few years then build a home where they could retire in peace.

But within a couple of months, the Rhode Island residents were well on their way to creating a getaway home to enjoy sooner rather than later. “The plan was to buy the land and sit on it for a while, but the way I operate, I never sit still on anything,” John says with a chuckle. “So away we went.”

Because they’d been searching for an existing log home for several years

before deciding to go custom, the couple knew exactly what they wanted — and didn’t want — when they reached out to Coventry Log Homes to begin the design-build process. “I had noticed in other log homes that the ceilings were notably short,” John says. “We picked the ‘Bear Rock’ model because we loved the vaulted ceilings with the beams and the triangle-style windows in the great room, which bring in all the light and views.”

The couple also appreciated that they could gather with their children and grandchildren with ease, thanks to the open-concept main floor and multiple outdoor areas made for entertaining. A rocking-chair-ready front porch extends a warm welcome to guests and wraps around to a graciously sized rear deck that offers mountain and water views, while a covered patio in the lower level

above The home’s 8-by-8-inch, D-shaped eastern white pine logs with mortise-and-tenon joinery and butt-and-pass corners are coated in a Sansin SDF stain in “Pine.”

opposite The great room is a feast for the eyes, with two modified king post trusses secured with steel plates and a towering natural stone fireplace with a white oak, half-log mantel. The color palette is rich yet tranquil.

right Cherry cabinetry around the perimeter of the kitchen is finished in a weathered gray, while the two-tiered maple island is painted black. Black-and gray-toned quartz countertops tie it all together. Engineered American Hickory hardwood floors from Hallmark's Novella collection (finished with TrueMark® Glaze Tek poly finish for durability) warm up the space, as does the addition of under-cabinet lighting. To aid the flow of traffic, John swapped the location of the built-in double ovens and refrigerator (both in matte black stainless steel) in the original plan – “because when you want to get a drink, you don't want to interrupt where people are cooking,” he says. The dining chairs (below), upholstered in a patchwork print, add a subtle dose of color to the neutral interiors.



opens to a backyard fire pit. When it is time to retreat without leaving the great outdoors, a three-season sunroom adjacent to the primary bedroom offers privacy.

With all its offerings inside and out, the plan ticked most of the boxes for the DePietros, but they tweaked the design to fit their specific needs.

For instance, they combined the two main-floor bedrooms into one spacious master suite, swapped a pantry for a utility closet off of the kitchen and incorporated a mezzanine with ladder access into one of the three upstairs guest bedrooms. They also added two extra logs to the wall system of their Coventry package “to get a little

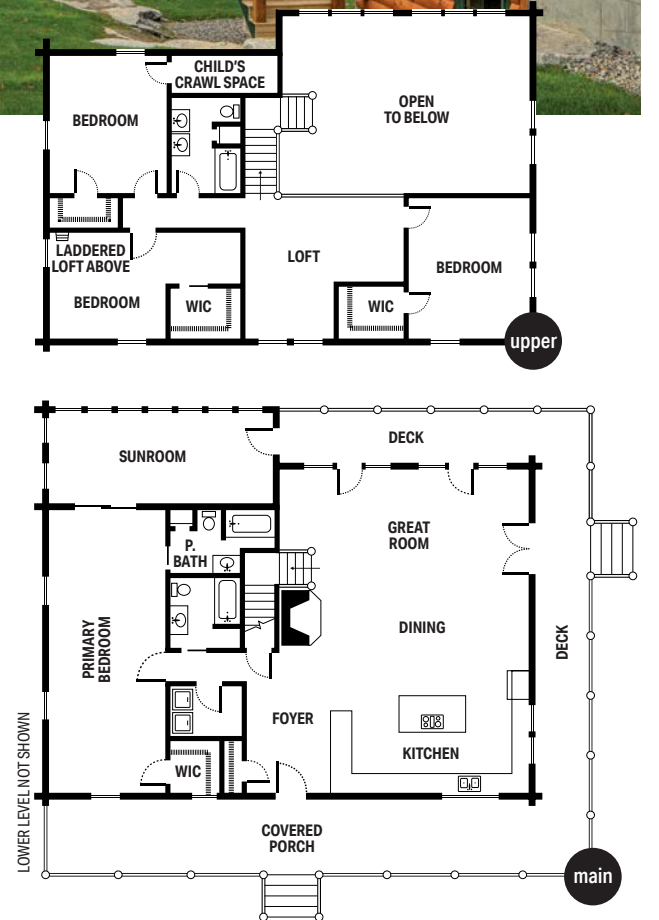
more height on the ceilings,” explains John. Other notable additions include a double-floor system throughout the entire second story to create space for mechanicals and in-floor radiant heat, as well as boost soundproofing between levels.

Once the design was complete and the property was prepped (a process

that included blasting through layers of igneous rock), the couple teamed up with builders Mike and Julie Hayward of Hayward & Company to lead construction. While John continued to head up the daily operations of his Rhode Island roofing business, Mike handled the boots-on-the-ground building process in New Hampshire.

The addition of custom details figured heavily in the project. White oak trees, harvested from the property, were used to build the half-log staircase, a bar top in the lower level, a set of end tables and the mantel on the stone fireplace. Other eye-catching details include reclaimed beams and a herringbone-pattern, tongue-and-

groove accent wall in the lower level, a forest-themed stainless steel panel in the loft and similarly patterned light fixtures throughout. Even the home's face plates have a back-to-nature motif. “We had a contest going to count the number of things that had bears on them, but I think we ran out of time,” Julie says with a laugh.



above **Black, laser-cut steel accents on the loft railing pop against the clear-acrylic-stained eastern white pine timbers and tongue-and-groove in Coventry's Craftsman-style purlin-and-truss roof system.**

With building behind them, John and Tami now spend weekends relaxing on their deck, sipping coffee and counting the living wildlife that meanders across their 17-acre property. (They've seen everything from moose to wild turkeys.) It's just one of the rewards of John's hurry-up-so-you-can-slow-down approach.

"When you're living in the everyday hustle and bustle, having a log cabin in the woods to retreat to is everything you dream of and then some," says Coventry Log Homes sales representative Richard Titorenko of the DePietros' home. "This is definitely their slice of heaven."

above **The home offers a menu of ways to enjoy the great outdoors, from the wraparound porch to the private sunroom to a covered patio below.**

top middle **Situated between two of the upstairs guest rooms and outfitted with a futon and television, the loft serves as a casual den and overflow sleeping space.**

top right **These stunning mountain and water views reward those who make the climb to the loft or relax in the sunroom.**

HOME DETAILS

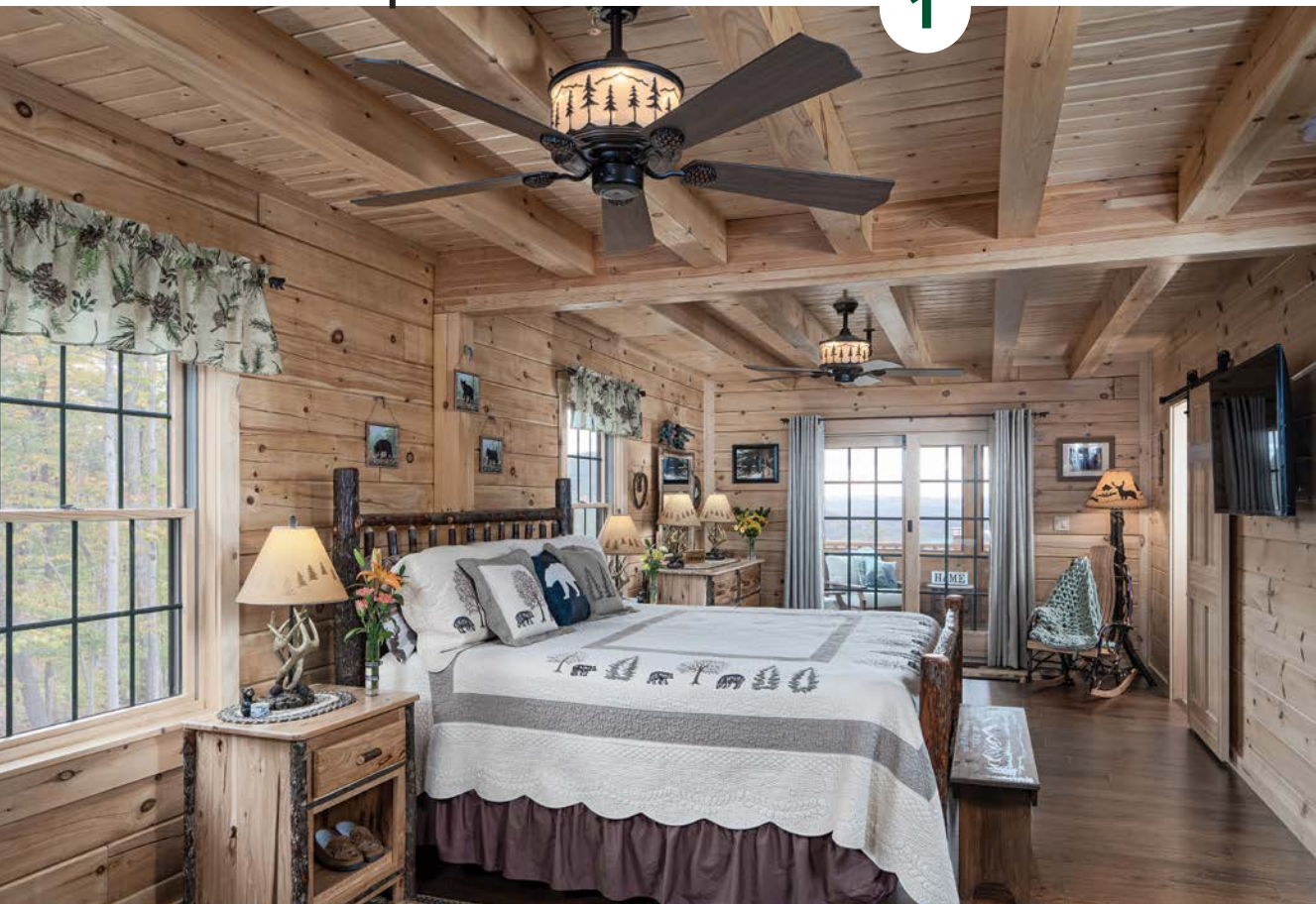
SQUARE FOOTAGE
2,714

BEDROOMS
5
(including bunk room)

BATHS
3 full, 1 half

LOG PROVIDER/DESIGN
COVENTRY
LOG HOMES
coventryloghomes.com

TAMI & JOHN'S
special
spaces



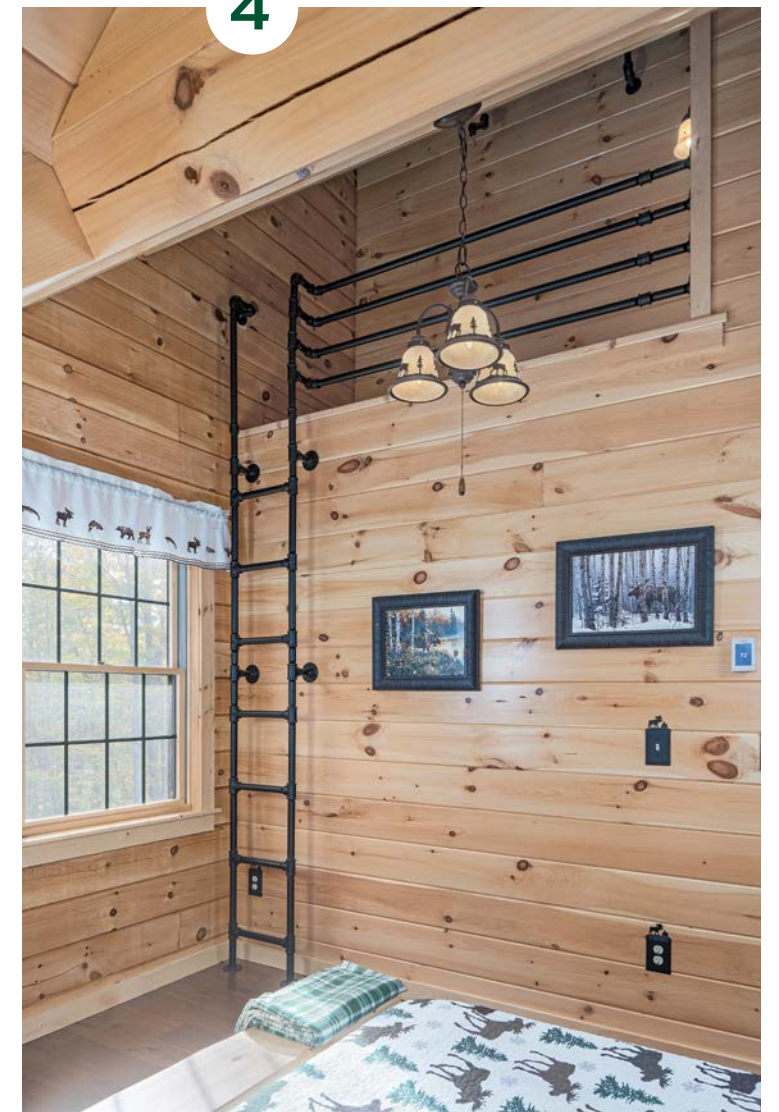
1



2



3

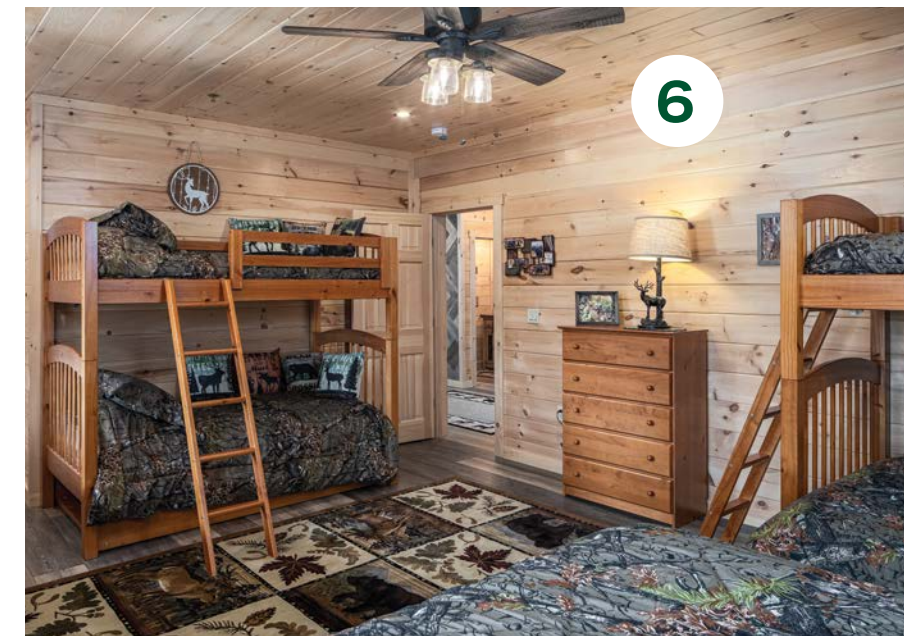


4

1 A sliding barn door, direct access to the porch and furnishings and lighting with a forest motif are a few of the details that make the primary bedroom feel special. 2 An enclosed porch off the bedroom is the perfect spot for enjoying the outdoors, rain or shine. 3 Raised copper sinks, a bark-edge vanity with matching pulls and wildlife-themed-everything lends a rustic but playful feel to the owners' en suite. 4 Rather than stretching the wall to the ceiling in the home's moose-themed guest bedroom, the builders carved out a cozy loft space, adding a ladder and safety rail made from gas piping. 5 The lower level is a medley of textures, including the stone fireplace, vinyl plank Flooret floors in Kingswood, half-log white oak stair treads and herringbone wall with transom windows. "That herringbone pattern brings in a nice texture and helps break up the straight tongue-and-groove on the walls and ceilings," says Julie. 6 A pair of twin bunks and a queen bed in the lower-level bunk room ensure plenty of space for the couple's grandchildren.



5



6