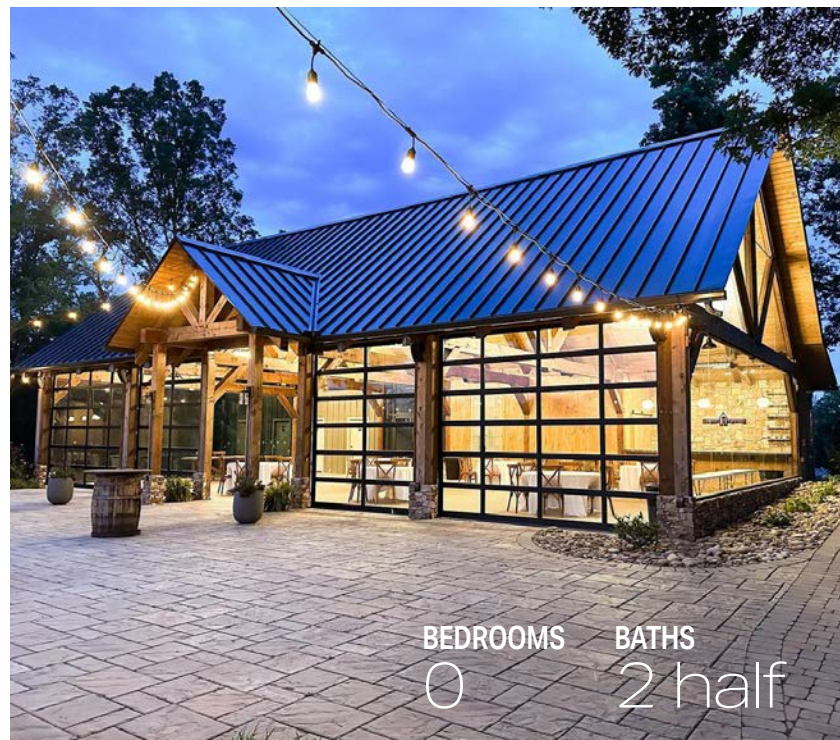


★ ★ ★  
*and the*  
**WINNERS**  
*are...*

As part of our annual National Log Homes Month (July) and SepTimber (September) celebrations, Log & Timber Home Living endeavors to find readers' favorite homes around the globe. Companies from near and far submit their projects, and thousands of readers vote on [LOGHOME.COM](https://www.loghome.com) and [TIMBERHOMELIVING.COM](https://www.timberhomeliving.com) for their favorites. Without further ado, here are the structures that stole voters' hearts in 2023:

Pramote - stock.adobe.com

**Log ADU:**  
**A VINEYARD VENUE**



BEDROOMS 0  
 BATHS 2 half

**COMPANY**  
**STONEMILL LOG & TIMBER HOMES**  
 stonemill.com

**SQUARE FOOTAGE**  
 1,960

**The Backstory**

This was designed with weddings, family reunions and corporate events in mind. Set against a breathtaking backdrop of the Great Smoky Mountains, the venue also boasts a private vineyard.

**Our Take**

The structure showcases the beauty of simplicity. Innovative use of the glass garage doors immerses guests in nature and allows for year-round use. With such a natural setting, the use of rustic timbers overhead is only appropriate.

Photo courtesy of Stonemill Log & Timber Homes

**Log Home Under 2,000 Square Feet:**  
**A CABIN WITH HISTORICAL CHARM**

**COMPANY**  
**STONEMILL LOG & TIMBER HOMES**  
 stonemill.com

**SQUARE FOOTAGE**  
 1,231

**BEDROOMS**  
 2

**BATHS**  
 2 full



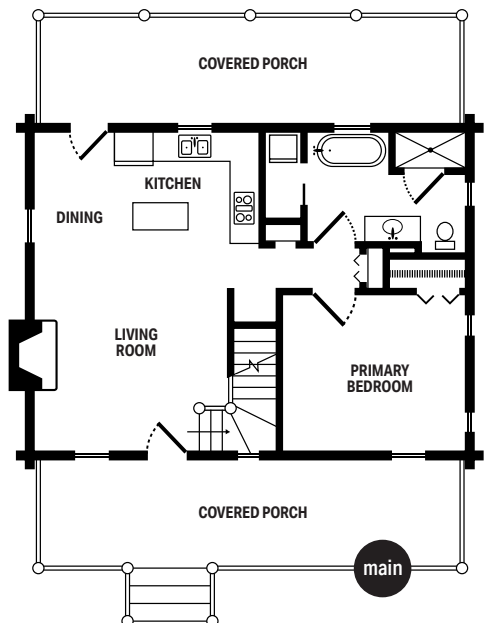
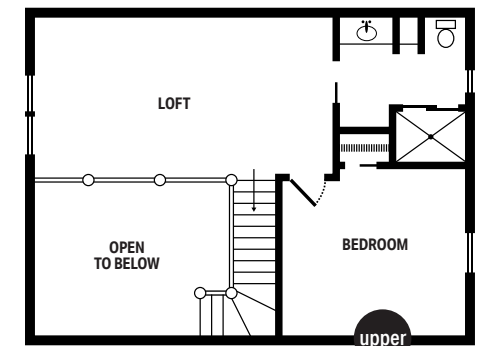
Photos courtesy of Stonemill Log & Timber Homes

**The Backstory**

This hybrid log and timber home was designed to replicate the John Oliver cabin in Great Smoky Mountains National Park and is something the owner dreamed of building since he was a child. Key features include tall ceiling heights, an open loft, a stone fireplace and solid wood interior finishes.

**Our Take**

This classic cabin makes efficient use of space in its traditional footprint and showcases how to fuse Appalachian charm (like the stone fireplace and wide bands of chinking) with modern life (a clean-lined soaking tub and contemporary light fixtures).



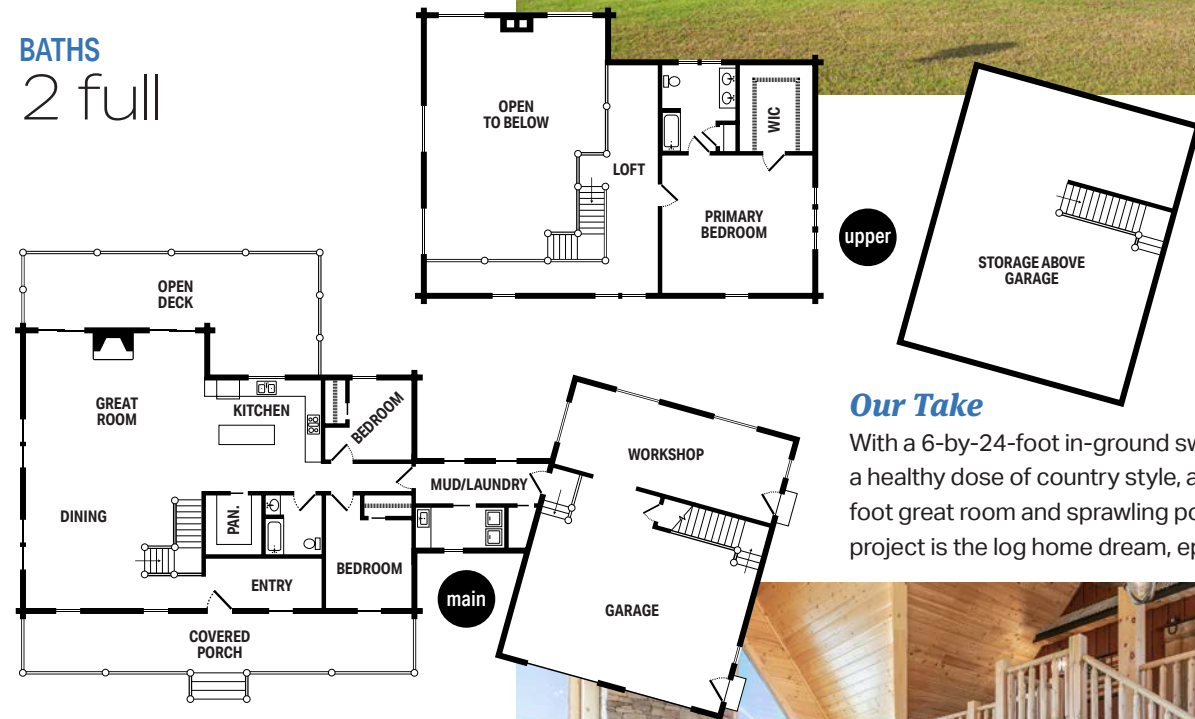
## Log Home 2,000-3,000 Square Feet: A CASE STUDY IN CUSTOMIZATION

**COMPANY**  
COVENTRY  
LOG HOMES  
coventryloghomes.com

**SQUARE FOOTAGE**  
2,731  
not including walk-out

**BEDROOMS**  
3

**BATHS**  
2 full



### Our Take

With a 6-by-24-foot in-ground swimming pool, a healthy dose of country style, an 868-square-foot great room and sprawling porch space, this project is the log home dream, epitomized.

### The Backstory

If this home looks familiar, it's because it was featured for the past year in our Dirt to Done series! It was a labor of love, with unique features such as a detached barn for the owner's car collection, a stone-veneer chimney rising 40 feet tall and plenty of entertaining space.



Photos by Mark Sorenson

## Log Home Over 3,000 Square Feet: A GETAWAY WITH A PERSONAL TOUCH

**COMPANY**  
HONEST ABE  
LOG HOMES  
honestabe.com

**SQUARE FOOTAGE**  
4,700

**BEDROOMS**  
3

**BATHS**  
2 full, 1 half



### The Backstory

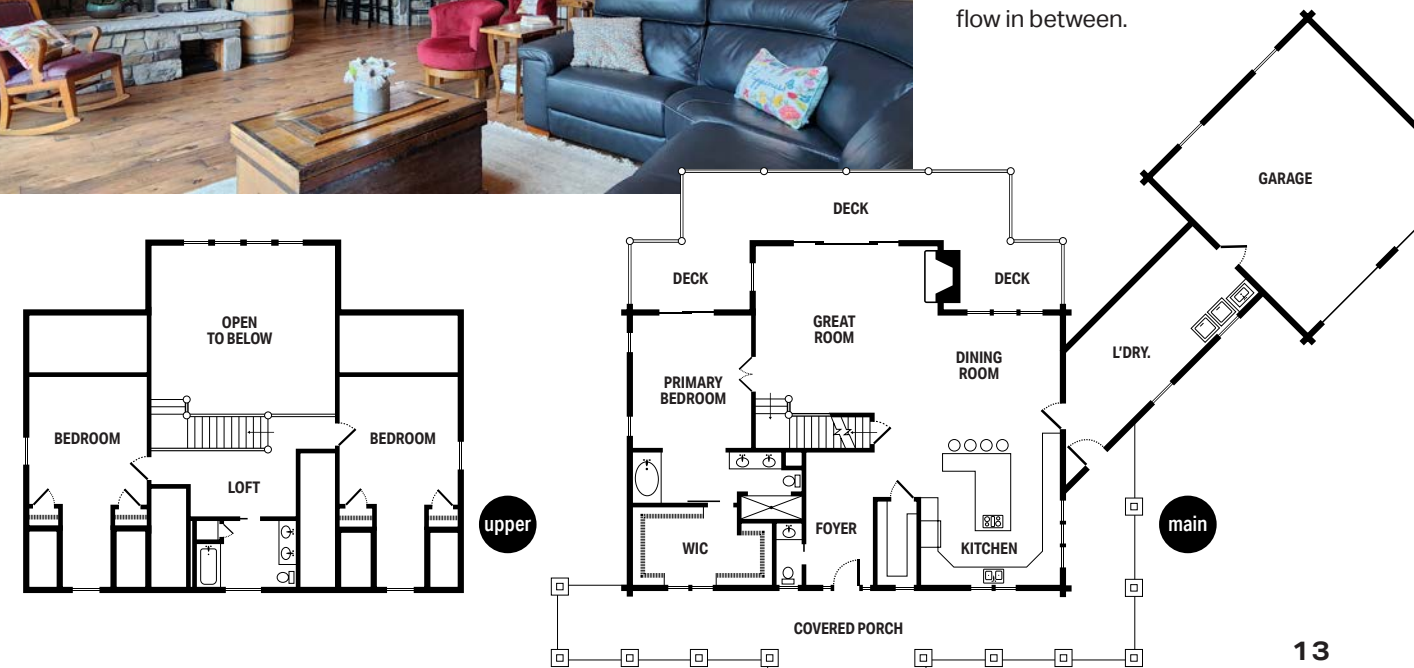
From the interior finishes to some of the architectural features, much of this home was actually completed by the owners. An extra log course increases the height, and the garage is connected by a breezeway with laundry for increased accessibility.



Photos courtesy of Honest Abe Log Homes

### Our Take

Despite the extra volume and generous square footage, this home still manages to capture that cozy cabin feel thanks to natural materials and a layout that compartmentalizes spaces with just the right amount of flow in between.



## Timber ADU: A BACKYARD BARN

COMPANY  
TIMBERLYNE  
timberlyne.com

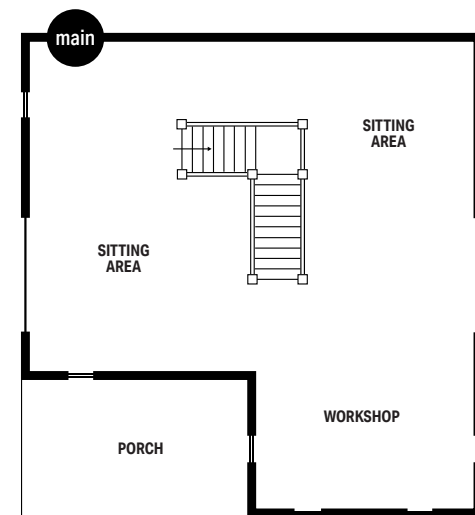
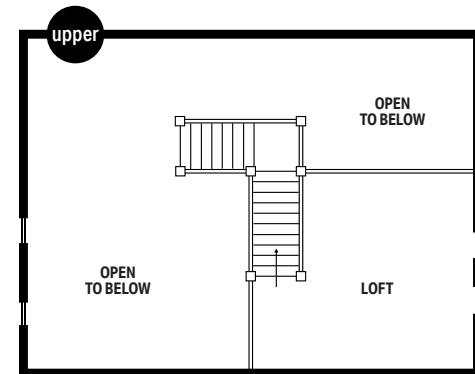
SQUARE FOOTAGE  
1,809

BEDROOMS

0

BATHS

0



Photos courtesy of Timberlyne

### The Backstory

Located in Kansas, this backyard barn is perfect for entertaining and making memories with family and friends. It was designed with social gatherings in mind, complete with dining space and a cozy loft.

### Our Take

With that irresistible Americana appeal on the exterior and incredible flexibility of space on the interior, this party barn proves why timber framing and post-and-beam construction have stood the test of time.

## Timber Home Under 2,000 Square Feet: A RETREAT ON THE LAKE

COMPANY  
TIMBERPEG  
timberpeg.com

SQUARE FOOTAGE  
1,561

BEDROOMS

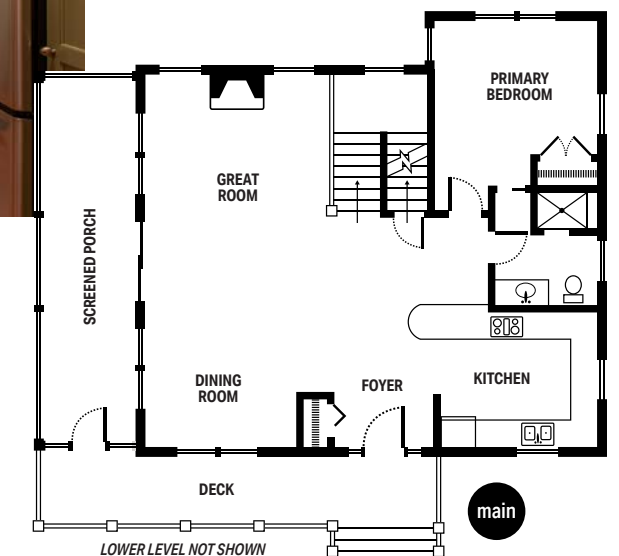
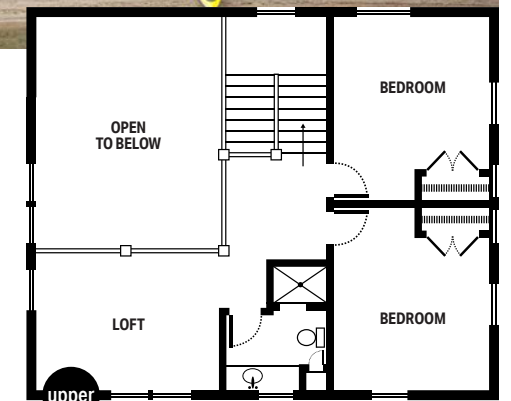
3

BATHS

2 full



Photos courtesy of Timberpeg



### The Backstory

A lake-front lot provides a beautiful setting for this barn-style, compact and highly functional home. It packs a punch in a petite footprint, with a gabled design and a large shed dormer that creates maximum usability upstairs.

### Our Take

Perched on the edge of a lake and set against a slight slope, this home is an excellent case study in smart siting and efficient design. And don't miss the kitchen, coated in a green shade that feels natural and polished all at once.

## Timber Home 2,000-3,000 Square Feet: A HIDEAWAY IN THE HEARTLAND

COMPANY  
TIMBERLYNE  
timberlyne.com

SQUARE FOOTAGE  
2,204

BEDROOMS  
3

BATHS  
3 full



Photos courtesy of Timberlyne

### The Backstory

Built as a sanctuary from city life, this home is full of comfort and character. The inside is appointed with spots to host company, while the exterior living areas immerse you in the beauty of the surrounding countryside.

### Our Take

With abundant seating between the L-shaped bar, dining room and great room (all of which flow into one another), this home isn't just about creating a refuge for rest and merriment — it's for sharing it.

## Timber Home Over 3,000 Square Feet: A FRESH TAKE ON FARMHOUSE

COMPANY  
TIMBERLYNE  
timberlyne.com

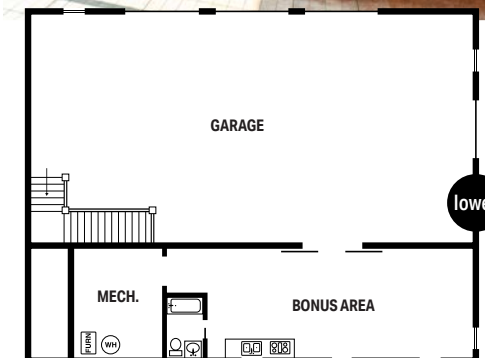
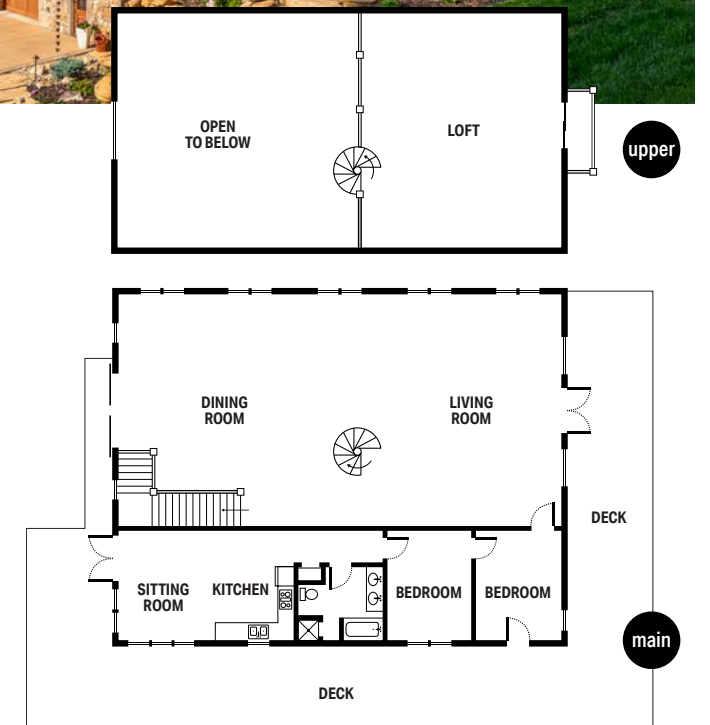
SQUARE FOOTAGE  
6,283

BEDROOMS  
2

BATHS  
2 full



Photos courtesy of Timberlyne



### The Backstory

This remarkable barn stands proudly on the very ground where the dairy barn of the owner's grandparents once stood. Now, transformed into a cherished home and gathering space, it serves as a symbol of the enduring spirit of family, community and tradition and is enveloped in Wisconsin's natural beauty.

### Our Take

This home boasts the best of both worlds. A 15-by-60 lean-to makes an ideal nest for a couple whose children have flown the coop, but just on the other side of the wall is a sprawling barn and loft for big family festivities.